



# ***ELSA GLoria™ II***

## **User Manual**

© 1999 ELSA AG, Aachen (Germany)

While the information in this manual has been compiled with great care, it may not be deemed an assurance of product characteristics. ELSA shall be liable only to the degree specified in the terms of sale and delivery.

The reproduction and distribution of the documentation and software supplied with this product and the use of its contents is subject to written authorization from ELSA.

ELSA is DIN EN ISO 9001 certified. The accredited TÜV CERT certification authority has confirmed ELSA conformity to the worldwide ISO 9001 standard in certificate number 09 100 5069, issued on June 15, 1998.

This product incorporates copyright protection technology that is protected by method claims of certain U.S. patents and other intellectual property rights owned by Macrovision Corporation and other right owners. Use of this copyright protection technology must be authorized by Macrovision Corporation, and is intended for home and other limited viewing uses only unless otherwise authorized by Macrovision Corporation. Reverse engineering or disassembly is prohibited.

#### Trademarks

Windows<sup>®</sup>, Windows NT<sup>®</sup> and Microsoft<sup>®</sup> are registered trademarks of Microsoft, Corp.

All other names mentioned may be trademarks or registered trademarks of their respective owners. The ELSA logo is a registered trademark of ELSA AG.

Subject to change without notice. No liability for technical errors or omissions.

ELSA AG  
Sonnenweg 11  
D-52070 Aachen  
Germany

ELSA, Inc.  
1630 Zanker Road  
San Jose, CA 95112  
USA

Aachen, November 1999

No. 21623/1199

# Preface

Thank you for placing your trust in this ELSA product.

With the *ELSA GLoria II* you have selected a graphics board which was designed as a product for professional CAD and visualization. The graphics processor on the board ensures high-speed generation of on-screen graphics making this board ideal for advanced CAD and visualization applications as well as for fast animation. ELSA products are subject to the highest of standards in production and quality control which are the foundation for consistently high product quality *ELSA GLoria II*.

## About this manual

This manual provides all the information you will need to get the best out of your ELSA graphics board. For instance, which resolution is best for which monitor, or how is the board upgraded? The accompanying ELSA utility programs are described, and you will find detailed information about 3D acceleration.

## Changes to this manual

ELSA products are subject to continual further development. It is therefore possible that the information printed in this manual is not current in all respects.

Current information about updates can always be found in the README files on the ELSA CD.

*If you have further questions or need additional help, you can rely on our online services which are available to ELSA customers.*





***Before you read on...***

*The installation of the ELSA GLoria II hardware and software drivers is described in full in the Installation Guide which accompanies this manual. You should refer to that document before attempting to install your board, and before reading this manual*

# Contents

<b>Introduction .....</b>	<b>1</b>
<i>ELSA GLoria II</i> highlights.....	1
What's in the box? .....	1
What hardware do I need? .....	1
CE conformity and FCC radiation standard .....	2
<b>After installing the drivers .....</b>	<b>3</b>
Software installation from the CD .....	3
The right settings .....	3
What are your options? .....	4
What makes sense? .....	4
Changing the resolution.....	5
Windows .....	5
ELSA SmartRefresh and ELSA SmartResolution .....	7
<b>Useful stuff and more .....</b>	<b>9</b>
Application settings under Windows NT.....	9
<i>ELSAinfo</i> .....	10
ELSA Diagnostics .....	10
ELSA ColorControl .....	11
Tools for AutoCAD .....	11
<i>ELSA POWERdraft</i> .....	11
<i>ELSAview 3D</i> .....	13
Tools for 3D Studio MAX/VIZ .....	17
<i>ELSA MAXtreme</i> .....	17
<b>All about graphics .....</b>	<b>19</b>
3D graphics representation.....	19
The 3D pipeline .....	19
3D interfaces.....	21
What APIs are available? .....	22
Direct 3D .....	22
OpenGL.....	23
Color palettes, TrueColor and gray scales .....	23
VGA .....	23
DirectColor .....	24
VESA DDC (Display Data Channel) .....	24
DDC2B .....	25
DDC2AB.....	25
<b>Technical data .....</b>	<b>27</b>

Characteristics of the graphics board .....	27
ELSA graphics board addresses .....	27
Ports on the graphics board .....	28
The VGA D-shell socket .....	28
<hr/>	
<b>Appendix .....</b>	<b>29</b>
DOC—Declaration of Conformity .....	29
Warranty conditions .....	30
<hr/>	
<b>Glossary .....</b>	<b>33</b>
<hr/>	
<b>Index .....</b>	<b>37</b>

# Introduction

## *ELSA GLoria II* highlights

- New nVIDIA Quadro graphics processor
- The raw power of 64MB of synchronous video memory plus up to 128 MB of AGP texture space
- 100% ELSA OpenGL drivers
- Pixel clock frequency up to 350 MHz
- ELSA drivers for Windows NT, Windows 9x and Windows 2000
- ELSA drivers for 3D stereo under Windows 9x and hardware OpenGL
- Application drivers for AutoCad and 3D Studio MAX/VIZ
- Four independent 3D rendering pipelines for maximum performance
- Product support via Internet WWW site
- Six-years warranty
- This board complies with the CE and FCC regulations

## What's in the box?

You will notice if your graphics board is missing. But you need to check that the box contained all of the following:

- Graphics board
- Installation Guide
- Manual
- CD-ROM with installation and driver software and utilities
- CD-ROM with ELSAmovie for Windows NT and Windows 9x

If any part is missing please contact your dealer. ELSA reserves the right to vary the products supplied without prior notice.

## What hardware do I need?

- **Computer:** Minimum requirements are a Celeron 300, Pentium II 300 or AMD K6 300 processor.
- **Bus:** The *GLoria II* is available as an AGP version. Your computer must have an AGP bus.
- **Monitor:** The *GLoria II* works with the standard IBM VGA compatible horizontal scan frequency of 31.5 kHz while booting and in DOS operation.

## CE conformity and FCC radiation standard

### CE

This equipment has been tested and found to comply with the limits of the European Council Directive on the approximation of the laws of the member states relating to electromagnetic compatibility (89/336/EEC) according to EN 55022 class B.

### FCC

This equipment has been tested and found to comply with the limits for a Class B digital device pursuant to Part 15 of the Federal Communications Commission (FCC) Rules.

### CE and FCC

These limits are designed to provide reasonable protection against radio frequency interference in a residential installation. This equipment generates, uses, and can radiate radio frequency energy. It may interfere with radio communications if not installed and used in accordance with the instructions. However, there is no guarantee that interference will not occur in a particular installation. If this equipment does cause interference to radio or television reception (this can be determined by turning this equipment off and on), the user is encouraged to try to correct the interference by one or more of the following measures:

- Reorient or relocate the receiving antenna.
- Increase the distance between this equipment and the receiver.
- Connect the equipment to an outlet on a circuit other than that to which the receiver is connected.
- Consult your dealer or an experienced radio/TV technician.
- Caution: To comply with the limits for an FCC Class B computing device, always use a shielded signal cable.



*Caution to the user: The Federal Communications Commission warns the user that changes or modifications to the unit not expressly approved by the party responsible for compliance could void the user's authority to operate the equipment.*



# After installing the drivers

In this chapter you will find descriptions of

- where you can find the software for operating your ELSA graphics board,
- the performance characteristics of your graphics board, and
- the most effective tuning for the combination of monitor and ELSA graphics board.

## Software installation from the CD



*The ELSA graphics board is normally supplied with software on a CD-ROM. You will find all the utilities described in this manual on the Product CD—unless they are a component of the operating system.*

Once you have successfully completed the steps described in the Installation Guide, your *ELSA GLoria II* is integrated into your computer system with installed drivers. You are now likely to be familiar with the program ELSA CD setup. If the autostart function for your CD-ROM drive under Windows has been switched off, the setup program on the Product CD will not start automatically. It can be found and started manually from the root directory of the CD and is called SETUP.EXE.

ELSA-Setup recognizes the operating system and the ELSA graphics board(s). First of all select the language for the installation and then the components you wish to install.

## The right settings

Our tip is: Invest a little time at this stage and you won't regret it. Take your time to set up your system just right. Your eyes will thank you for it, and you are guaranteed to have more fun in front of your screen.

To set up your system properly, the following questions should be answered:

- What is the maximum resolution I can set on my system?
- Which color depth do I want to use?
- What value should I set for my display refresh rate?

To help you find the answers to these questions, this chapter has been divided according to the operating systems available. Just look for the section about the operating system you use. All the information you need is here and all the software you need, if not already a part of your operating system, is on the Product CD.

## What are your options?

The tables below show the maximum possible resolutions for the ELSA graphics board. Note that these resolutions cannot be achieved under all operating conditions.

Color depth:	max. Refresh Rate (Hz)	3D Resolutions with Double-Buffering	
		HighColor (16 bit)	TrueColor (32 bit)
2048 x 1536	85	■	■
1920 x 1200*	113	■	■
1920 x 1080	125	■	■
1792 x 1120*	129	■	■
1600 x 1280	127	■	■
1600 x 1200	135	■	■
1600 x 1000*	162	■	■
1536 x 960*	176	■	■
1280 x 1024	196	■	■
1152 x 864	200	■	■
1024 x 768	200	■	■
800 x 600	200	■	■
640 x 480	200	■	■

\*\* *Special resolutions for 16:10 wide format monitors (e.g. ELSA ECOMO 24H96)*  
*HighColor = 65,536 colors, TrueColor = 16.7 million colors*

## What makes sense?

There are some basic ground rules for you to follow when setting up your graphics system. On the one hand, there are the ergonomic guidelines, although nowadays these are met by most systems, and on the other hand there are limitations inherent to your system, e.g. your monitor. The question of whether your applications need to run using large color depths—perhaps even TrueColor—is also important. This is an important condition for many DTP or CAD workstations. We recommend that games and “normal” Windows applications are operated in HighColor with 65,536 colors.

### “More Pixels, more fun”

This is an opinion which is widespread, but which is not entirely true under all circumstances. The general rule is that a refresh rate of 73Hz meets the minimum ergonomic

requirements. The resolution to be selected also depends on the capabilities of your monitor. The table below is a guide to the resolutions you might select:

Monitor size	Typical image size	Minimum resolution	Maximum resolution	Ergonomic resolution
17"	15.5" - 16"	800 x 600	1024 x 768	1024 x 768
19"	17.5" - 18.1"	1024 x 768	1280 x 1024	1152 x 864
20"/21"	19" - 20"	1024 x 768	1600 x 1200	1280 x 1024
24"	21" - 22.5"	1600 x 1000	1920 x 1200	1600 x 1000

## Changing the resolution

You set the resolution of your graphics board in the Control Panel under Windows. The procedure is the same for Windows 98 and Windows NT.

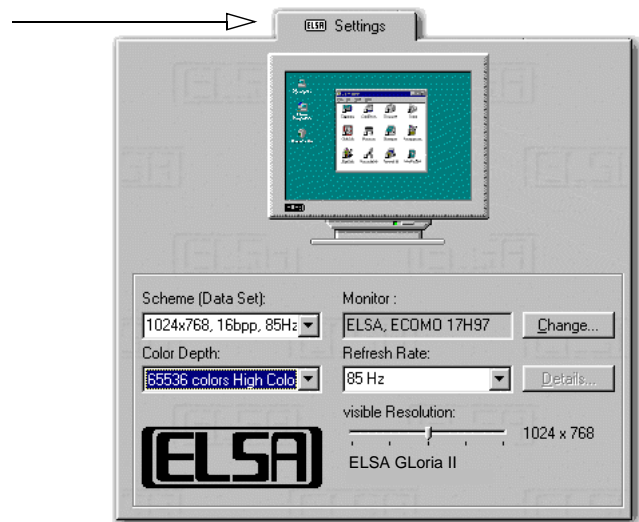
## Windows

The '**ELSA** Settings' are automatically integrated into the Control Panel during the installation of the *WINman Suite*. You can use these Settings to tweak your graphics system for the best performance. The '**ELSA** Settings' provide some great features. Once you have specified the graphics board model and the monitor data, the program will automatically detect which settings are possible and which are not. This means, for instance, that it is impossible for you to select an incorrect refresh rate which might damage your monitor.

- ① Click on **Start**, then select **Settings ► Control Panel**.
- ② You will find the **Display** icon in the Control Panel. When you start this program, you are shown a dialog box where you can modified the display settings.
- ③ Select the 'Settings' tab and click on the button **Advanced....**

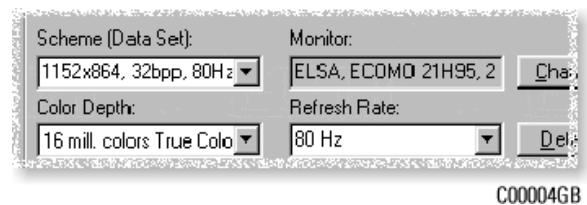
- ④ Here you should click on the 'ELSA Settings' tab.

'ELSA Settings' has all the options for setting up the graphics board for your monitor.



It is important to carry out the following settings or checks step by step:

- the monitor type
- the resolution of the monitor image (Scheme, Data Set)
- the color depth, and
- the refresh rate.



### Choosing the monitor

If your monitor supports DDC, the preset values will be displayed under 'Scheme'. If this is not the case, click on **Change...** to call up the database of monitor types. You will be presented with a list of monitor manufacturers and monitor models. If your manufacturer is present, click on the entry and then select your model. If your monitor is not listed, there are two options. One option is to select the '\_Standard monitor' from the list of manufacturers and then select the resolution you wish to work with.

A second option requires information about the technical specifications for your monitor. Consult your monitor manual to ensure that you have the correct information. Click on **Change...** in the 'Monitor type database' window. In addition to the information regarding the monitor manufacturer, and the model designation, you will have to enter the fre-

quency ranges for the horizontal and vertical scan frequencies and specify the diagonal size of your monitor.

If your monitor type is not listed in the monitors database you can enter the monitor manufacturer and model type here.

The vertical and horizontal frequency ranges and the diagonal size of the screen are the important settings.

C00005.GB



*Check your entries for the image frequencies carefully, as otherwise you might damage your monitor. Look these up in your monitor manual or consult the monitor manufacturer.*

## ELSA SmartRefresh and ELSA SmartResolution

Click on the **Details** button in the 'ELSA Settings' to open a dialog where you can adjust the refresh rates and video timings individually. In addition you can change the resolution in steps of 32 pixels. The graphics mode fine-tuning tool is especially for screens in portrait or wide-angle format, or with the 4:3 aspect ratio. In such cases it is clearly advantageous to have the option of freely-selectable values.

**Free choice:** Resolution and refresh rates can be freely adjusted.

**Note:** The settings for the monitor timings should only be changed by specialists.



## Useful stuff and more

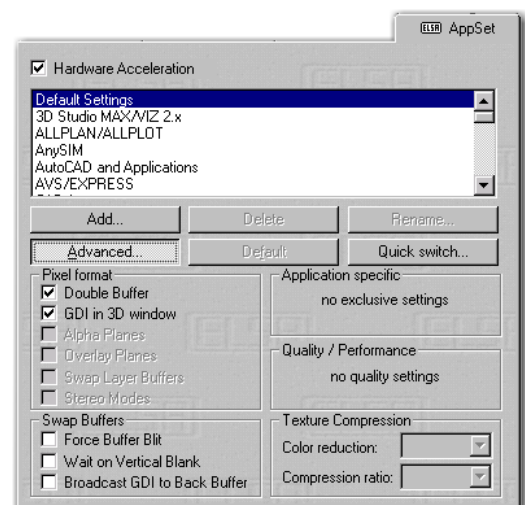
Apart from the ELSA drivers, the Product CD also contains additional programs and utilities for use with the *ELSA GLoria II*, a selection of which we will introduce here. Information about other programs can be taken from the README files on the CD.

## Application settings under Windows NT

The 'ELSA AppSet' are part of the control panel and are automatically installed when you install the ELSA driver. Use the commands

**Start ► Settings ► Control Panel**

to open the 'Control Panel' folder, in which you will find the 'Display' icon, among others. Double-click on this icon to open an index card with a number of different tabs. Click on the 'ELSA AppSet' tab.



The 'ELSA AppSet' features a selection of many common CAD applications. The settings for these applications have already been optimized and set up for the ELSA drivers.

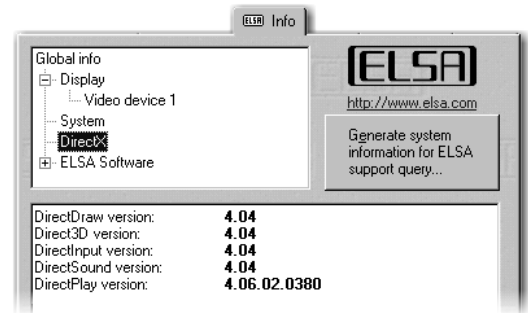
You can also add your own entries with customized 3D settings to this list. Just click on **Add**, enter the name of the application and enter the settings you require. Click on **Apply** to include the new entry in the selection list.



*Press F1 or click on the Help button to call up the Online help. The Online help has more detailed information on the Application Settings.*

## ELSAinfo

Use *ELSAinfo* to investigate your system. In addition to the details about your graphics board you will find information about your computer system, the DirectX and OpenGL driver versions and the ELSA software you have installed. This information provides a basis for generating a report that can be of use in case you require support. This collection of information provides the ELSA Support with all the information they need to guarantee you fast and relevant help.



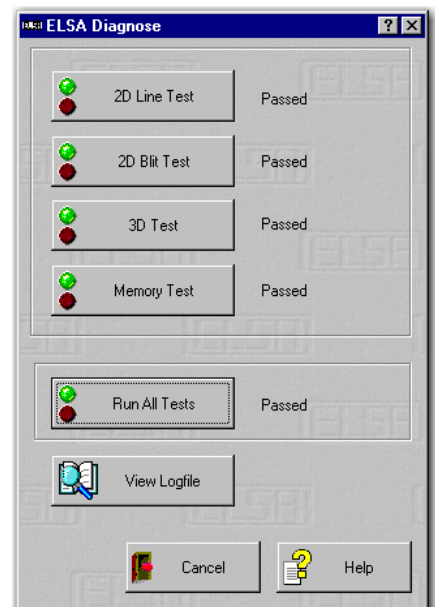
## ELSA Diagnostics

This diagnostic utility from ELSA lets you quickly and reliably check for hardware defects.

If you are experiencing display errors and are unsure that they are being caused by your graphics board, then the various routines in this utility check for the error and determine, or exclude, its source.

Access the Control Panel to activate this program:

**Start ► Settings ► Control Panel**

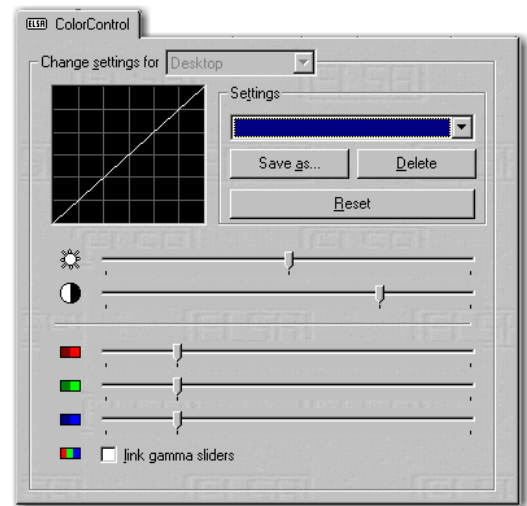




## ELSA ColorControl

The ELSA ColorControl application permits the optimal adjustment of the color and brightness of your monitor.

The midrange tones of photographs or game scenes often appear too dark due to technically inevitable non-linearities in the brightness of CRT screens, or as a result of a variety of image compression algorithms. Attempts to compensate these errors using the brightness and contrast controls generally available on monitors usually results in an overall worsening of the display quality. Generally the brighter parts of the image will be washed out, or the image as a whole will appear too hard.



ELSA ColorControl affects the processing of image information on the graphics board (i.e. before the signal reaches the monitor), thus permitting a targeted adjustment of the midrange brightness. As a result, you can then take advantage of the full contrast and brightness ranges of your monitor.

## Tools for AutoCAD

You can achieve significantly improved working speeds and ergonomics with the drivers and extensions for AutoCAD developed in-house at ELSA.

### ***ELSA POWERdraft***

*POWERdraft* is one of the most powerful productivity enhancement tools for AutoCAD for Windows. The following versions are supplied by *ELSA POWERdraft*:

- *ELSA POWERdraft* for AutoCAD R14
- *ELSA POWERdraft* for AutoCAD 2000

Seamlessly integrated into the AutoCAD environment, your *POWERdraft* driver offers significant improvements over existing driver technology. *POWERdraft* is an extremely fast and reliable driver platform for AutoCAD. Proven 32-bit display list technology and an intimate knowledge of your ELSA graphics adapter combine to provide an excellent solution for the most demanding AutoCAD users.

Additionally, your *POWERdraft* driver includes the powerful utilities *MagniView*, *MultiView* and *Cockpit*, each designed to accent the AutoCAD drafting environment without

inhibiting it. Fully dynamic and integrated through ELSA's SmartFocus technology, each utility is fully transparent to AutoCAD and available during any AutoCAD command.

### **ELSA POWERdraft hardware renderer**

For AutoCAD 2000, there is the ELSA hardware renderer (ELSA.hdi), which is responsible for the graphics acceleration for the 3D views. The driver directly accesses the ELSA OpenGL ICD, and makes 100% use of the implemented AutoCAD 2000 extensions. This results in more than twice the 3D graphics performance of the standard AutoCAD driver.

### **Smart Focus**

ELSA's SmartFocus technology, which is used in all *POWERdraft* windows, keeps you from having to switch the focus between driver windows and the AutoCAD windows. After using a function in one of the driver windows, any keyboard entry or crosshair movement automatically makes AutoCAD the active window again. You don't have to expressly click in a window to activate it, as is in the case with other drivers.

### **MagniView**

Unique among "spy glass" devices, the MagniView offers maximum functionality with a minimum size. ELSA's SmartFocus technology makes the MagniView completely modeless, allowing the MagniView to update dynamically, tracking the AutoCAD cursor to display a "zoomed in" view of the editing area. This magnified view can aid the drafter in picking AutoCAD entities, including grips and other editing artifacts, or in finding special information within the drawing.

### **MultiView**

Enclosed within the Cockpit window, the MultiView offers a configurable visual history of previous views. Displaying a record of one to one hundred prior views, the MultiView represents each view visually on a button face. This gives instant access to any previous view, and can be used to record and playback selected views consistently.

*In AutoCAD 14, the views can only be stored during a session.*

### **Cockpit**

A tool without equal, the Cockpit offers dynamic zooming and panning of the current viewport with just a flick of the mouse, while being sized small enough to fit within the AutoCAD scrolling area. Shaped to resemble two joy sticks, adjusting your view is as easy as pick, drag and release. Through ELSA's SmartFocus technology, the Cockpit is completely transparent and fully dynamic, making it perfect for small adjustments to your view while editing. There is also a remote control option using the keyboard (refer to the help file).



## Installation

In the root directory of your product CD, you will find the program SETUP.EXE. Start this program. Choose the desired software installation, and click **Install**. Otherwise, or in the case of difficulty, please do the following: Make sure that AutoCAD is not running:

- ① In Windows on the Start menu, click **Run**.
- ② Insert the product CD, and using **Browse...**, go to the \ELSAWARE\ACAD' directory. Then select your AutoCAD version, and start SETUP.EXE from there.
- ③ Confirm by clicking **OK**, and follow the instructions.
- ④ Select the language to be used in the installation dialogs.

SETUP finds your AutoCAD by reading the association for the file extension DWG.

You will have to modify the path accordingly, if you wish to set up *POWERdraft* for a different AutoCAD installation.



*We do not recommend that you use the AutoCAD directory as the directory for the POWERdraft installation.*

After *ELSA POWERdraft* is successfully installed, AutoCAD will automatically use the *POWERdraft* driver on startup. If you wish to switch between the original AutoCAD driver and *POWERdraft*, you will find a choice of the two drivers in the Windows Start menu, under the 'ELSAware' program group, and under *POWERdraft*. You may toggle between them.



*If, for any reason, you uninstall POWERdraft, ensure that the AutoCAD driver is enabled!*

## ELSAview 3D

*ELSAview 3D* is a tool for observing complex 3D objects and scenes. It can be run either as a stand-alone program, or in conjunction with AutoCAD. Because *ELSAview 3D* can read the major 3D import formats, it is able to import data from other CAD applications.

### Software environments

*ELSAview 3D* currently supports the following environments:

- AutoCAD R14 under Windows NT 4.0  
(Most of the extensions based on this version of AutoCAD (e.g. Mechanical Desktop, Architectural Desktop, etc.) are also supported.)
- AutoCAD 2000 under Windows NT 4.0
- CAD applications under Windows NT 4.0 with suitable export formats
- As a stand-alone 3D viewer under Windows NT 4.0

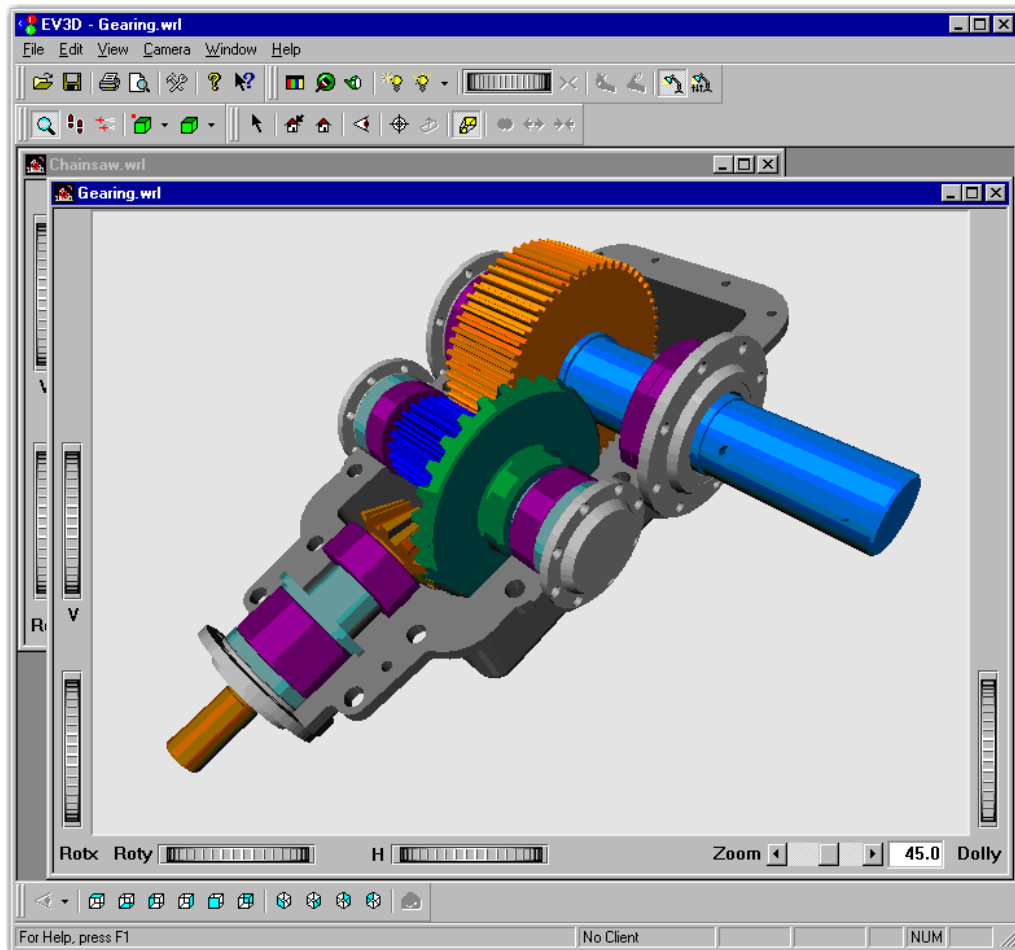
**What does *ELSAview 3D* offer?**

*ELSAview 3D* integrates seamlessly into existing AutoCAD installations, directly accessing the database of the CAD application. New objects, editing operations, etc. are automatically identified, and are immediately displayed in *ELSAview 3D*. Since objects are depicted in a separate window, the user can immediately manipulate them and observe them from all sides, without losing their context to the current work. With a press of a button, a chosen camera setting can be sent to AutoCAD, to update the current work. This greatly simplifies the complicated AutoCAD camera setting, thus increasing productivity. *ELSAview 3D* offers a user-friendly interface. 3D objects can easily be moved, zoomed, and rotated with the mouse. Each camera setting can be saved as a predefined setting, which can be called up later.

*ELSAview 3D* not only allows objects to be turned and observed from all sides with the mouse, but it also allows the viewer to walk or even fly through complex scenes. This way, any planning or construction deficiencies can be identified early on. Also, clients can be given a preview of the product, before it is actually created.

In its stand-alone mode, *ELSAview 3D* is excellent for presentations. This removes the necessity for installing extensive CAD software at the client's premises. A prepared data file and *ELSAview 3D* are all that is needed. The editing capability makes it easy to

change materials and lighting of individual objects during the presentation with the client. The newly created impression can be immediately assessed.



Here are just a few of the capabilities that *ELSAview 3D* offers:

- Direct AutoCAD support
- Stand-alone functionality for presentations, and as a 3D viewer
- Various rendering modes: Gouraud, flat, hidden line and wire frame
- Orthographic, perspective camera
- Stereo support
- 3D input device support
- Import and export formats: IV, VRML 1.0, VRML 2.0, BMP, TIFF, JPEG, RGB, PS
- Various editors for color, materials and light sources
- Manipulation of cross-sections
- Named views, ISO views, predefined views
- Script language for operating the viewer from within AutoCAD
- File links for other CAD programs
- Examiner, walk and fly modes
- Object filters
- Selective rendering of details (partial geometries)
- Control of the representation precision

### Installation

The *ELSAview 3D* installation program can be found on the enclosed CD. Insert the CD in your CD-ROM drive.

- ① In the root directory of the CD-ROM drive, start the program **SETUP.EXE**.
- ② Follow the instructions in the dialogs.

The following points should be considered:

- During installation you will be asked, whether or not to install *ELSAview 3D* with a link to AutoCAD. If you have AutoCAD installed on your system, you should choose the installation with the link. This will integrate *ELSAview 3D* into AutoCAD. (Of course, you can still use *ELSAview 3D* in stand-alone mode.)
- So that *ELSAview 3D* is automatically called when AutoCAD is started, one of the installation dialogs asks about the ACAD.RX file used by your AutoCAD installation. In most cases, the default file selected by the installation program is correct.



*During installation, it is also possible to search your hard drive or the network drive, to make another ACAD.RX file the start file for ELSAview 3D.*

Once you have successfully completed installation, you can directly start AutoCAD with *ELSAview 3D* and begin working.



*Press F1 to call up the online help. There you will find information on the capabilities that ELSAview 3D offers.*

## Tools for 3D Studio MAX/VIZ

You can achieve significantly improved working speeds and ergonomics with the drivers and extensions for 3D Studio MAX developed in-house at ELSA.

### **ELSA MAXtreme**

ELSA offers a special driver for the 3D Studio MAX 2.5, MAX 3.0 and VIZ 2.x . The development of this driver has been based on the Heidi driver from 3Dlabs, which takes full advantage of the graphics chip's capabilities. The optimization of the ELSA driver lets you reach higher display speeds and thus is indispensable for the *ELSA GLoria II*.

#### **Installation**

- ① Ensure that 3D Studio MAX/VIZ has not been started.
- ② Insert the Product CD into the CD-ROM drive and start the **SETUP.EXE** program from the directory `\ELSAWARE\3DSMAX`.

The program guides you through each step of the installation. Read the instructions carefully, and answer and confirm each of the questions.



*Further information on this special driver can be found in the README.TXT file in the directory on the Product CD.*





# All about graphics

This is the chapter where we really get stuck in. Anyone who wants to know more about graphics—especially in connection with the *ELSA GLoria II*—will find a whole load of technical stuff right here.

## 3D graphics representation

Today it is considered de rigeur to know all about 3D. Your curiosity will be aroused as soon as you experience the first visual wizardry generated by your new graphics board. Two features of the 3D display will leap out at you: it's both realistic and fast. The amount of work required here is known only to the processor, but we will describe it in detail to you below.

### The 3D pipeline

What actually happens when a monitor displays a 3D object? The data describing the 3D object are passed through what is known as the 3D pipeline, in which the mathematical calculations for its representation in space and perspective on the monitor are carried out. What happens in detail?



#### Start: The object data

The pipeline starts at the object. The object description is made up of the data (points).

#### Geometrical transformation

This part of the 3D pipeline is very processor-intensive, as all the calculations for the 3D scene are carried out at this stage. Simplified, it comprises of the following steps:

- **Illumination** – The illumination of the scene by different light sources is calculated.
- **Transformation** – In transformation, the objects are aligned in perspective as seen from the observer's point of view.
- **Back face culling** – This process computes hidden surfaces resulting from the observation perspective chosen. Any object having an invisible front surface is omitted.
- **3D clipping** – In this process, each polygon is checked to determine whether it is partially or fully invisible. The invisible faces or parts of objects will be removed.
- **Scaling on the screen** – The above steps are now calculated for three-dimensional space using normalized coordinates. The on-screen image coordinates will only now be computed.

## Rendering

At this stage, the 3D scene is filled with color shades and textures are applied. Different processes and methods are also applied here.

- **Texture mapping** – At this stage, the 3D object undergoes a sort of “face lift”. The materials and textures are assigned. Different methods are used here to make the textures appear realistic, even when enlarged or reduced. As a first step, the textures are computed:
  - Point sampling is the simplest method. A pixel-by-pixel comparison is made between the texture template and the surface to be filled. This method leads to a very coarse representation, especially when enlarged.
  - In linear mapping, a new color value is interpolated from the adjacent pixels (or texels) of a texture. This gives better results than point sampling, as the hard boundary between the coarse pixels is blurred.
  - The MIP mapping method stores a large number of enlargement stages for the texture. The depth information of a primitive is then used to determine which enlargement stages of the texture will be used in drawing. Normal textures seldom contain more than 256 colors.

The first 15 bits of a 16-bit wide color representation are reserved for the colors (5/5/5 > R/G/B). Information concerning the transparency of the texture is carried in the alpha channel. The last bit is reserved for this information. Finally, a distinction is made in MIP mapping between bilinear and trilinear filtering. Bilinear filtering interpolates between two pixels of two textures, trilinear filtering interpolates between four pixels for each of two textures.
  - Bump mapping introduces a new dimension. Relief or raised textures can only be generated with the other methods in two dimensions using light and shadow effects. In bump mapping, the texture is additionally assigned height information, which allows very realistic three-dimensional effects to be created.

The staircase effect is corrected by anti-aliasing. This is either done by interpolating mixed pixels, in which a new color value is computed from two adjacent color values, or by using transparent pixels of the same color which are overlaid over adjacent pixels.

- **Shading** – Shading takes account of the effects created by different light sources on the 3D object and provide for a very realistic overall impression. Here, too, there are different methods which are more or less processor-intensive:
  - Flat shading assigns a color value to each polygon. This results in a mosaic-like, jagged representation, which demands only a short processing time.
  - In Gouraud shading, all the vertices of the polygons are assigned a color value. The remaining pixel information for the polygon is interpolated. This method gives a very gentle color transition, even with fewer polygons than are required for flat shading.
  - The Phong shading method additionally takes a normal vector of reflectivity into consideration when interpolating. An even more realistic impression is generated by the representation of reflections and mirror images.
  - Certain applications use ray tracing methods. This is a very computer-intensive and time-consuming process in which each individual pixel and its reflection in 3D space is calculated.

#### ■ **The frame buffer**

The finished image will not be written to the frame buffer until this complex sequence of steps is completed. The frame buffer is made up of front and back buffer. The back buffer acts as a buffer page, in which the next image to be displayed is built up. This prevents the process of image drawing being visible. The duplicate storage method is also known as double buffering.

### **Flipping: Display on the monitor**

The content of the front buffer is displayed on the monitor. When the drawing process in the back buffer is completed, this image is then passed to the front buffer in a process known as flipping.

The next image will only ever be displayed once the image drawing process in the back buffer is completed. This procedure should be repeated at least 20 times a second to give a smooth representation of 3D scenarios. In this context, we speak of frames per second (fops), a very important value for 3D applications. A cinema film runs at 24 fps.

## **3D interfaces**

Software interfaces, including 3D interfaces, are known as APIs (Application Program Interface). The question is what are these interfaces used for, and how do they work.

In simple terms: They make developers' work easier. The methods by which the various interfaces function, are comparable: In the past it was necessary to address the various hardware components directly in programming if you wanted to exploit their capabilities to the full. The APIs are a kind of translator operating between the hardware and the software.

The specification of standard definitions was the precondition for the proper function of these translation routines. These definitions are implemented by the hardware manufacturers during development and optimized for the hardware concerned. Developers can implement complex procedures relatively easily by using these definitions. They can use a uniform command set when programming and do not need to know the characteristics specific to the hardware.

## **What APIs are available?**

There are a good dozen more or less commonly found 3D APIs. However, in recent years, two formats have established themselves as the favorites: Direct 3D and OpenGL. ELSA graphics boards support these commonly found 3D interfaces. The functional differences between the interfaces are slight. The decisive questions for the user concern extensibility, flexibility and possible portability to existing applications.

## **Direct 3D**

As a development of Mode X and DirectDraw under Windows 3.1x, Direct 3D is a branch of the DirectX multimedia family which was developed directly for Windows 95 to accelerate the slow 3D display characteristics of the operating system. Direct 3D is based on Microsoft's Common Object Model (COM), which is also used as the foundation to OLE technology (Object Linking and Embedding). Direct 3D cooperates with Direct Draw in two-dimensional display. A typical situation would be, for instance, rendering a 3D object while Direct Draw is placing a two-dimensional background bitmap.

## **Immediate mode and retained mode**

As can be assumed from the two terms, immediate mode is a programming mode that is close to the hardware. Retained mode, on the other hand, is a programming mode that is largely predefined through an API interface. What does this mean in detail? Looking at the two systems hierarchically, the immediate mode is also known as the low-level mode. The programming interface level is close to the hardware level and permits the programmer direct access to special functions in the hardware component concerned. The retained mode (high-level mode) makes it possible, for example, to load a defined 3D object with textures into a Windows application. Here it can be manipulated and moved using simple API commands. Translation takes place in real time, without the need to know the technical structure of the object.

*For further information see the Internet WWW site <http://www.microsoft.com>*



## OpenGL

Following its success in gaining a good reputation amongst professionals using CAD/CAM programs, OpenGL is now increasingly penetrating the PC market. OpenGL is platform-independent and makes a distinction between immediate and display list modes. A display list stores specific sequences that can be recalled again later. The object descriptions can then be taken directly from the list, resulting in very high performance. However, if objects need to be manipulated frequently, the display list will have to be generated again from new. In this case, the speed advantage is lost. OpenGL provides a wide range of graphics features, from rendering a simple geometric point, line, or filled polygon, to the most sophisticated representations of curved surfaces with lighting and texture mapping. The some 330 routines of OpenGL provide software developers access to these graphics capabilities:

For further information see the Internet WWW site <http://www.sgi.com>

## Color palettes, TrueColor and gray scales

Common graphics modes are listed in the following table. Not all graphics modes are available on the *ELSA GLoria II* boards.

Graphics mode	bpp	bpg	Colors (from palette)	Max. gray levels
VGA 0x12	4	6+6+6	16 of 262,144	16
VGA 0x13	8	6+6+6	256 of 262,144	64
Standard	8	6+6+6	256 of 262,144	64
	8	6+6+6	256 of 16.7 million	256
HighColor	15	5+5+5	32,768	32
	16	6+6+4	65,536	16
	16	5+6+5	65,536	32
TrueColor	24	8+8+8	16.7 million	256
	32	8+8+8+8	16.7 million	256

(bpp = bits per pixel; bpg = bits per gun)

## VGA

In VGA graphics adapters, the digital color information stored in the video memory (4 bits for 16 colors or 8 bits for 256 colors) is converted into a digital 18-bit value in the graphics adapter in a CLUT (ColorLookUpTable). The 3 x 6 bits are converted separately for R/G/B (red/green/blue) in the RAMDAC (D/A converter) and transferred to the monitor as analog signals on just three lines (plus sync lines). The original color values are converted into completely different values by means of a translation table. The value stored in the video memory is thus not a color value, but only a pointer to a table in which the actual color value is found. The advantage of this method: Only 8 bits need to be stored for each

pixel, although the color values are 18 bits wide; the disadvantage: Only 256 colors can be displayed simultaneously from a palette of 262,144 possible colors.

## **DirectColor**

The situation is different in the case of DirectColor (TrueColor, RealColor and HighColor). In this case, the value stored in the video memory is not translated but is passed directly to the D/A converter. This means that the full color information must be saved for each pixel. The meanings of the terms RealColor, TrueColor, and HighColor can be confused, as they are not always used unambiguously.

## **HighColor and RealColor**

HighColor and RealColor usually describe a 15 or 16-bit wide graphics mode, while TrueColor should only be used for the more professional 24-bit mode (or 32-bit) mode.

15 bits provide 5 bits each for the red, green and blue values, resulting in 32 levels per RGB component and thus 32,768 (=  $32 \times 32 \times 32$ ) different color hues.

The 16-bit graphics modes are organized differently. Most common are (R-G-B) 5-6-5 (e.g. XGA) and 6-6-4 (e.g. i860). 5-6-5 means that 5 bits are used for each of red and blue and 6 bits are used for green. In the case of 6-6-4, 6 bits are used for red and green and 4 bits for blue. Both ways of assigning the bits correspond to the color sensitivity of the human eye: this is highest for green and lowest for blue. 65,536 different colors can be displayed.

## **TrueColor**

The TrueColor mode is more complex, using 24 bits per pixel. Here, 8 bits are available for each color component (256 levels), resulting in 16.7 million different color hues. There are more colors available than pixels on the screen (1.3 million pixels at a resolution of 1280 x 1024 ).

## **VESA DDC (Display Data Channel)**

The Display Data Channel provides a serial data channel between the monitor and the graphics board, as long as both support DDC and the monitor cable includes the additional DDC wire. This feature allows the monitor data to be sent automatically to the graphics board (e.g. name, type, max. horizontal frequency, timing definitions etc.) or even for the graphics board to send instruction to the monitor.

There are various standards; DDC2B and DDC2AB.

## DDC2B

A bi-directional data channel based on the I2C access-bus protocol is used for the communication between monitor and graphics board. In the case of a standard IBM VGA compatible 15-pin monitor connector, pin 12 (formerly used as monitor ID bit 1) is used for data transmission (SDA), and the pin 15 (formerly used as monitor ID bit 3) is used as transmission clock (SCL). The graphics board can request the short EDID information (see DDC1) as well as the more comprehensive VDIF information (VESA Display Identification File).

## DDC2AB

With DDC2AB additional to DDC2B, the computer can send commands for controlling the monitor, e.g. for adjusting the screen position or the brightness (similar to ACCESS bus). Modern monitors and graphics boards no longer use this standard.

*The pin assignment of the VGA D-shell socket can be found in the chapter 'Technical data'.*







# Technical data

Those with a technical interest will find more detailed information regarding the *ELSA GLoria II* in this chapter. All interfaces and their assignments are described in detail.

## Characteristics of the graphics board

	<b>ELSA GLoria II</b>
Graphics processor	Quadro by nVidia
RAMDAC pixel timing	350MHz
On-board memory	64 MB with over 2.4 Gbps bandwidth
BIOS	Flash-BIOS with VBE 3.0 support
Bus system	AGP, 2x/4x (AGP 4x is only supported by special mainboard chipsets, e.g. Intel 820, Intel 840 and VIA Apollo Pro133A)
VESA DDC	DDC2B

## ELSA graphics board addresses

The ELSA graphics boards are 100% IBM VGA compatible and occupy the same memory area and specific addresses in the I/O range. The memory range above 1 MB is automatically assigned through the PCI BIOS interface.

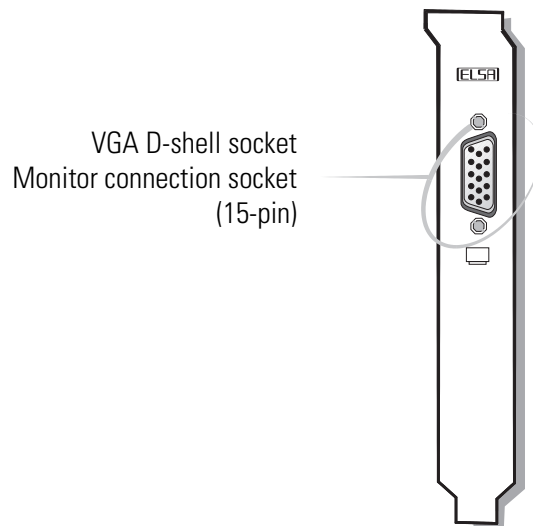


*If you come across any address conflicts, try to modify the I/O address of the expansion board causing the conflict. The addresses of the ELSA graphics boards cannot be changed! The GLoria II also requires an interrupt (IRQ) which is free. This may have to be reserved in the computer's BIOS. For help with this theme, refer to the manual for your mainboard.*

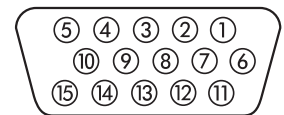
To ensure that your system functions properly, the addresses and ranges occupied by the ELSA graphics board must not be accessed simultaneously by other hardware components. The following addresses are assigned:

- **I/O addresses:**  
Standard VGA I/O (3B0-3DF)
- **Memory addresses:**  
Video RAM (A0000-BFFFF)  
Video BIOS-ROM (C0000-C7FFF)

## Ports on the graphics board



## The VGA D-shell socket



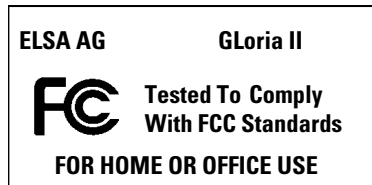
### Pin assignment

Connection	Signal	Connection	Signal
1	Red	9	+5 V
2	Green	10	Sync ground
3	Blue	11	Monitor ID2
4	Monitor ID0	12	Bidirectional data (SDA, DDC1/2B)
5	DDC ground	13	Horizontal synchronization
6	Red ground	14	Vertical synchronization
7	Green ground	15	Data timing (SCL, DDC2B)
8	Blue ground		

The *ELSA GLoria II* issues analog signals in accordance with the requirements of directive RS-170. The synchronization information is sent separately.

# Appendix

## DOC–Declaration of Conformity



### Compliance Information Statement (Declaration of Conformity Procedure)

Responsible Party: ELSA Inc.

Address: 1630 Zanker Road  
San José, CA 95112  
USA

Phone: +1-408-961-4600

Type of Equipment: Graphics Board

Model Name: GLoria II

This device complies with Part 15 of the FCC rules.  
Operation is subject to the following two conditions:  
(1) this device may not cause harmful interference, and  
(2) this device must accept any interference received, including interference that may cause undesired operation.  
See user manual instructions if interference to radio reception is suspected.

On behalf of the manufacturer / importer  
this declaration is submitted by

Aachen, October 15<sup>th</sup> 1999

Stefan Kriebel  
VP Engineering  
ELSA AG, Germany

## Warranty conditions

The ELSA AG warranty, valid as of June 01, 1998, is given to purchasers of ELSA products in addition to the warranty conditions provided by law and in accordance with the following conditions:

### 1 Warranty coverage

- a) The warranty covers the equipment delivered and all its parts. Parts will, at our sole discretion, be replaced or repaired free of charge if, despite proven proper handling and adherence to the operating instructions, these parts became defective due to fabrication and/or material defects. Also we reserve the right to replace the defective product by a successor product or repay the original purchase price to the buyer in exchange to the defective product. Operating manuals and possibly supplied software are excluded from the warranty.
- b) Material and service charges shall be covered by us, but not shipping and handling costs involved in transport from the buyer to the service station and/or to us.
- c) Replaced parts become property of ELSA.
- d) ELSA are authorized to carry out technical changes (e.g. firmware updates) beyond repair and replacement of defective parts in order to bring the equipment up to the current technical state. This does not result in any additional charge for the customer. A legal claim to this service does not exist.

### 2 Warranty period

The warranty period for ELSA products is six years. Excepted from this warranty period are ELSA color monitors and ELSA videoconferencing systems with a warranty period of 3 years. This period begins at the day of delivery from the ELSA dealer. Warranty services do not result in an extension of the warranty period nor do they initiate a new warranty period. The warranty period for installed replacement parts ends with the warranty period of the device as a whole.

### 3 Warranty procedure

- a) If defects appear during the warranty period, the warranty claims must be made immediately, at the latest within a period of 7 days.
- b) In the case of any externally visible damage arising from transport (e.g. damage to the housing), the transport company representative and ELSA should be informed immediately. On discovery of damage which is not externally visible, the transport company and ELSA are to be immediately informed in writing, at the latest within 7 days of delivery.
- c) Transport to and from the location where the warranty claim is accepted and/or the repaired device is exchanged, is at the purchaser's own risk and cost.
- d) Warranty claims are only valid if the original purchase receipt is returned with the device.

### 4 Suspension of the warranty

All warranty claims will be deemed invalid

- a) if the device is damaged or destroyed as a result of acts of nature or by environmental influences (moisture, electric shock, dust, etc.),
- b) if the device was stored or operated under conditions not in compliance with the technical specifications,

- c) if the damage occurred due to incorrect handling, especially to non-observance of the system description and the operating instructions,
- d) if the device was opened, repaired or modified by persons not authorized by ELSA,
- e) if the device shows any kind of mechanical damage,
- f) if in the case of an ELSA Monitor, damage to the cathode ray tube (CRT) has been caused especially by mechanical load (e.g. from shock to the pitch mask assembly or damage to the glass tube), by strong magnetic fields near the CRT (colored dots on the screen), or through the permanent display of an unchanging image (phosphor burnt),
- g) if, and in as far as, the luminance of the TFT panel backlighting gradually decreases with time, or
- h) if the warranty claim has not been reported in accordance with 3a) or 3b).

## **5 Operating mistakes**

If it becomes apparent that the reported malfunction of the device has been caused by unsuitable software, hardware, installation or operation, ELSA reserves the right to charge the purchaser for the resulting testing costs.

## **6 Additional regulations**

- a) The above conditions define the complete scope of ELSA's legal liability.
- b) The warranty gives no entitlement to additional claims, such as any refund in full or in part. Compensation claims, regardless of the legal basis, are excluded. This does not apply if e.g. injury to persons or damage to private property are specifically covered by the product liability law, or in cases of intentional act or culpable negligence.
- c) Claims for compensation of lost profits, indirect or consequential detriments, are excluded.
- d) ELSA is not liable for lost data or retrieval of lost data in cases of slight and ordinary negligence.
- e) In the case that the intentional or culpable negligence of ELSA employees has caused a loss of data, ELSA will be liable for those costs typical to the recovery of data where periodic security data backups have been made.
- f) The warranty is valid only for the first purchaser and is not transferable.
- g) The court of jurisdiction is located in Aachen, Germany in the case that the purchaser is a merchant. If the purchaser does not have a court of jurisdiction in the Federal Republic of Germany or if he moves his domicile out of Germany after conclusion of the contract, ELSA's court of jurisdiction applies. This is also applicable if the purchaser's domicile is not known at the time of institution of proceedings.
- h) The law of the Federal Republic of Germany is applicable. The UN commercial law does not apply to dealings between ELSA and the purchaser



# Glossary

- **3D** – Three-dimensional
- **3D clipping** – Process in geometric transformation in which invisible surfaces or parts of a 3D object are removed.
- **3D pipeline** – Sum of all steps required for the representation of virtual 3D scene on the monitor. These include →tessellation, →geometrical transformation and →rendering.
- **Active matrix** – → TFT
- **AGP** – stands for Accelerated Graphics Port and is a further development by INTEL based on the PCI bus. The AGP bus provides a greater bandwidth for data transmission and communicates directly with main memory. The bus is primarily intended for 3D graphics boards.
- **Aliasing** – the familiar "staircase effect". Jagged transitions are often formed between adjacent pixels in the representation of diagonals or curves. These "jaggies" can be smoothed out by anti-aliasing.
- **Alpha blending** – Additional information for each pixel for creating transparent materials.
- **Back buffer** – is the name for the image region built up in the background in the →frame buffer during →double buffering.
- **Back face culling** – Method used to calculate the hidden faces of a 3D object.
- **BIOS** – Abbreviation of Basic Input/Output System. A program code in the read-only memory (ROM) of a computer which performs the self-test and several other functions during system startup.
- **Bump mapping** – Process by which textures are assigned depth information which allows the display of relief or raised structures.
- **Bus system** – A system of parallel data lines for the transfer of information between individual system components, especially to expansion boards (e.g. PCI bus).
- **Chrominance** – Color information in the video signal.
- **Clipping** – parts of polygons invisible to the representation are determined in clipping. These parts are then not displayed.
- **Composite video** – Video signal transmission where →chrominance and →luminance are combined (also known as FBAS).
- **D/A Converter** – Digital/Analog converter: A signal converter which converts a digital input signal to an analog output signal.
- **DCC** – (Digital Content Creation). DCC is the computer-based production of professional visualizations and animations for the field of digital media and the entertainment industry.
- **DDC** – stands for Display Data Channel. A special data channel through which a DDC-capable monitor can send its technical data to the graphics board.
- **Depth complexity** – refers to the number of objects that are in front of each other within a scene. For example, a wall behind a group of people, with yet another person in front of them, results in a depth complexity of 3. This is a typical value for 3D environments.
- **DirectColor** – Generic term for →TrueColor, →RealColor and →HiColor. The value that is stored in the video RAM is not translated but transferred directly to the D/A converter. This means that the full color information must be saved for each pixel.

- **Double buffering** – means that there are two display buffers. This means that the next image can be drawn in the page of the display buffer, which is initially invisible. This image will be displayed once it is ready and the next image will be prepared in the other page of the buffer. Animations and games look more realistic with this technique than with single buffering.
- **DPMS** – Abbreviation of VESA Display Power Management Signaling. This standard allows an energy-saving operation of monitors in several steps. The graphics boards described in this manual support VESA DPMS.
- **DRAM** – Abbreviation of Dynamic Random Access Memory. Volatile memory for read and write operations.
- **DSTN** – Double Super Twisted Nematic
- **EDO-RAM** – Abbreviation for Extended Data Output Random Access Memory (Hyper Page Mode). EDO-RAM is very common on graphics boards, as the most recently used data persist in memory. A number of read accesses to similar data occur during the generation of an image, so that use of EDO-RAM gives a significant speed advantage.
- **FBAS** – →Composite video
- **FCC** – FCC compliance means that a device has been tested and found to comply with the limits for a Class B digital device pursuant to Part 15 of the FCC Rules, designed to provide reasonable protection against harmful interference in a residential installation.
- **FIFO method** – (first in, first out) a system used in batch processing and queues in which the first signal to arrive is processed first.
- **Fill rate** – Is the rate at which pixels are drawn into the screen memory, and expresses the overall performance of the processor. Current values are around 50-85 Mpixels/s. With increasing demands of resolution, →depth complexity and fps, the fill rates will have to increase dramatically.
- **Fixed-frequency monitor** – A monitor that can only be operated at a specific resolution and refresh rate.
- **Flat shading** – →"shading".
- **Fps** – Or frame rate, refers to how many times per second the scene is updated by the rendering engine. Frame rates beyond 30 fps achieve smoother, more realistic animation.
- **Frame buffer** – Part of the graphics memory in which the image next to be displayed on the screen is generated. In addition, transparency effects are calculated in the frame buffer.
- **Front buffer** – is the name for the visible image page in →double buffering.
- **Geometric transformation** – The position of the object in space is determined from the observer's point of view.
- **Gouraud shading** – →"shading".
- **Graphics accelerator** – refers to a graphics accelerator board, i.e. a board particularly suited for graphics intensive user environments.
- **HighColor** – designates a 15-bpp or 16-bpp (bits per pixel) graphics mode, i.e. 32,768 or 65,536 colors.
- **Horizontal scan frequency** – The horizontal scan frequency of a monitor in kHz. This value must be set in accordance with the operating limits of the monitor, otherwise the monitor might be damaged in extreme cases.
- **Interpolation** – A video image must be stretched or shrunk in order to fit into the display window. If pixels are simply multiplied (for example, a block of four equally colored pixels



represents the original pixel), aliasing effects ("blocks" and "stairs") will occur. This can be avoided by interpolation procedures (using average colors for inserted pixels). Horizontal interpolation is relatively easy to perform, since the pixels are drawn to the screen in lines. Vertical interpolation is more difficult and requires a complete pixel line to be buffered.

- **LCD** – Liquid Crystal Display
- **Line frequency** – Monitor line frequency (horizontal deflection frequency) in kHz. This value must be set in accordance with the operating limits of the monitor, otherwise the monitor might be damaged in extreme cases.
- **Luminance** – Brightness information (black/white) in the transmission of video signals.
- **MIP mapping** – In MIP mapping a number of textures are assigned to an object depending on distance. The representation of the object becomes more detailed as the observer approaches the object. This stops the system from computing invisible amounts of detail.
- **Multifrequency/ Multisync monitor** – A monitor that can be operated at various horizontal scan frequencies, or that automatically adapts itself to different video signals (resolutions).
- **OpenGL** – 3D software interface (3D API). E.g. implemented in Windows NT and available for Windows 95. Based on Iris GL from Silicon Graphics and licensed from Microsoft and ELSA.
- **Page flipping** – The image generated in the →back buffer is displayed.
- **PCI bus** – Abbreviation of Peripheral Component Interconnect Bus. An advanced bus system, i.e. a system of parallel data lines to transfer information between individual system components, especially to expansion boards.
- **Phong Shading** – → "shading".
- **Pixel** – Picture element. Dot in the image.
- **Pixel clock frequency** – is the number of pixels drawn per second in MHz.
- **Polarisation** – ■ **Primitive** – Simple, polygonal geometrical object, such as a triangle. 3D landscapes are generally broken down into triangles.
- **RAM** – Abbreviation of Random Access Memory. Chip memory of a computer or expansion board that can be read from and written to (unlike ROM = Read Only Memory).
- **RAMDAC** – The RAMDAC converts the digital signals to analog signals on a graphics board. VGA monitors are only capable of processing analog signals.
- **RealColor** – RealColor normally designates a 15-bpp or 16-bpp (bits per pixel) graphics mode, i.e. 32,768 or 65,536 colors).
- **Refresh rate** – or image refresh frequency (in Hz) indicates how many times per second an image on the monitor is refreshed.
- **Rendering** – Process for calculating the representation of a 3D scene, in which the position and color of each point in space is determined.
- **Resolution** – The number of pixels in horizontal and vertical direction on the screen, for example 640 horizontal by 480 vertical pixels (640 x 480).
- **RGB** – Color information is saved in the Red/Green/Blue color format.
- **ROM** – Abbreviation of Read Only Memory. Semiconductor memory that can only be read and not written to.
- **Shading** – Shading or rendering is a way to define the colors on curved surfaces in order to give an object a natural appearance. The three

most important 3D shading methods differ in the algorithm used to apply colors to these triangles: flat shading: the triangles are uniformly colored. Gouraud shading: The color shades on a triangle are calculated by interpolating the vertex colors, resulting in a smooth appearance of the surface. Phong shading: the color shades on a triangle are calculated by interpolating the normal vector.

- **Shutter glasses** – Goggles which use stereoscopic LCD projection of 3D scenery to give the observer a strong impression of space.
- **Single buffer** – In contrast to double buffering, where the image buffer is duplicated, single buffering cannot refer to image information which has already been calculated. This means, for example, that animations run jerkily.
- **S-Video** – or S-VHS. Signal transmission of video information, where the signals for →chrominance and →luminance are separated. This results in a higher picture quality.
- **TCO** – Stands for the Swedish Confederation of Professional Employees. The TCO publish worldwide-recognized ergonomic recommendations (e.g. TCO 95).
- **Tearing** – In →double-buffer mode, a distinction is made in double buffering between the front buffer and the back buffer. Tearing becomes visible when switching between front and back buffer occurs. This appears as a horizontal division within the picture, similar to the effect of flickering monitors filmed on TV. Normally, the switching takes place during the vertical synchronization (v-sync) and so stays invisible.
- **Tessellation** – The objects for 3D calculations are divided up into polygons (triangles) in tessellation. The vertices, color and, if required, transparency values, are determined for the triangles.
- **Textures** – Wrapping a bitmap around an object, including perspective correction, for example wallpaper on a wall or a wood texture on furniture. Even a video can be used as a texture map.
- **TFT** – Thin Film Transistor; often named active matrix display. Based on LCD technology
- **TrueColor** – Graphics mode with 16.7 million colors (24 or 32 bits per pixel). In this mode, the color information saved in the display memory is not translated by a look-up table, but passed directly to the D/A converter. This means that the full color information must be saved for each pixel.
- **VESA** – Abbreviation of Video Electronics Standards Association. A consortium for the standardization of computer graphics.
- **VRAM** – Abbreviation for video RAM. Memory chip for fast graphics boards.
- **YVU** – A video image can be represented using three components called Y, V, and U. Y represents the →luminance, or brightness, part of an image-essentially a black and white picture. V and U together represent the →chrominance, or color, part of an image: V represents saturation and U represents hue.
- **Z buffer** – 3D depth information (position in the third dimension) for each pixel.

# Index

## ■ Numerics

- 3D clipping ..... 20, 33
- 3D pipeline ..... 19, 33

## ■ A

- Addresses ..... 27
- AGP ..... 33
- Alpha blending ..... 33
- Anti aliasing ..... 21
- API ..... 21

## ■ B

- Back buffer ..... 21, 33
- Back face culling ..... 20, 33
- BIOS ..... 27, 33
- Bump mapping ..... 20, 33
- Bus ..... 27

## ■ C

- Chrominance ..... 33
- Clipping ..... 33
- Color palettes ..... 23
- COM ..... 22
- Composite video ..... 33

## ■ D

- D socket ..... 28
- DCC ..... 33
- DDC ..... 33
- Declaration of Conformity ..... 29
- Depth complexity ..... 33
- Direct 3D ..... 23
- DirectColor ..... 24, 33
- DirectDraw ..... 22
- DirectX ..... 10
- DMA ..... 27
- Double buffering ..... 34
- Driver versions ..... 10

## ■ F

- FCC ..... 2, 34
- Fill rate ..... 34

- Filtering ..... 20
- Flat shading ..... 21, 34
- Flipping ..... 21, 35
- Fps ..... 34
- Frame buffer ..... 21, 34
- Front buffer ..... 21, 34

## ■ G

- Geometric transformation ..... 34
- Geometrical transformation ..... 19
- Gouraud shading ..... 21, 34
- Graphics accelerator ..... 34
- Grey scales ..... 23

## ■ H

- Hardware description ..... 27
- Hardware test ..... 10
- HighColor ..... 24, 34

## ■ I

- I/O address ..... 27
- Immediate mode ..... 22
- Interpolation ..... 34
- Interrupt ..... 27
- IRQ ..... 27

## ■ L

- Line frequency ..... 35
- Luminance ..... 35

## ■ M

- Memory ..... 27
- Memory addresses ..... 27
- MIP mapping ..... 20, 35
- Mode X ..... 22
- Monitor ..... 6

## ■ O

- OLE ..... 22
- OpenGL ..... 10, 23, 35

## ■ P

- PCI bus ..... 35

Phong shading ..... 21, 35  
Pin assignment ..... 28  
Point sampling ..... 20  
Primitive ..... 20, 35  
Products supplied ..... 1

**R**

RAMDAC ..... 27, 35  
Ray tracing ..... 21  
RealColor ..... 24, 35  
Refresh rate ..... 35  
Rendering ..... 20, 35  
Retained mode ..... 22

**S**

S video ..... 36  
Shading ..... 21, 35  
Single buffer ..... 36

**T**

Tearing ..... 36  
Tessellation ..... 36  
Texture mapping ..... 20  
Textures ..... 36  
Transformation ..... 20  
TrueColor ..... 23, 24, 36

**V**

VESA ..... 36  
VESA DDC ..... 27  
VGA ..... 23

**Y**

YVU ..... 36

**Z**

Z-buffer ..... 36